



unesco

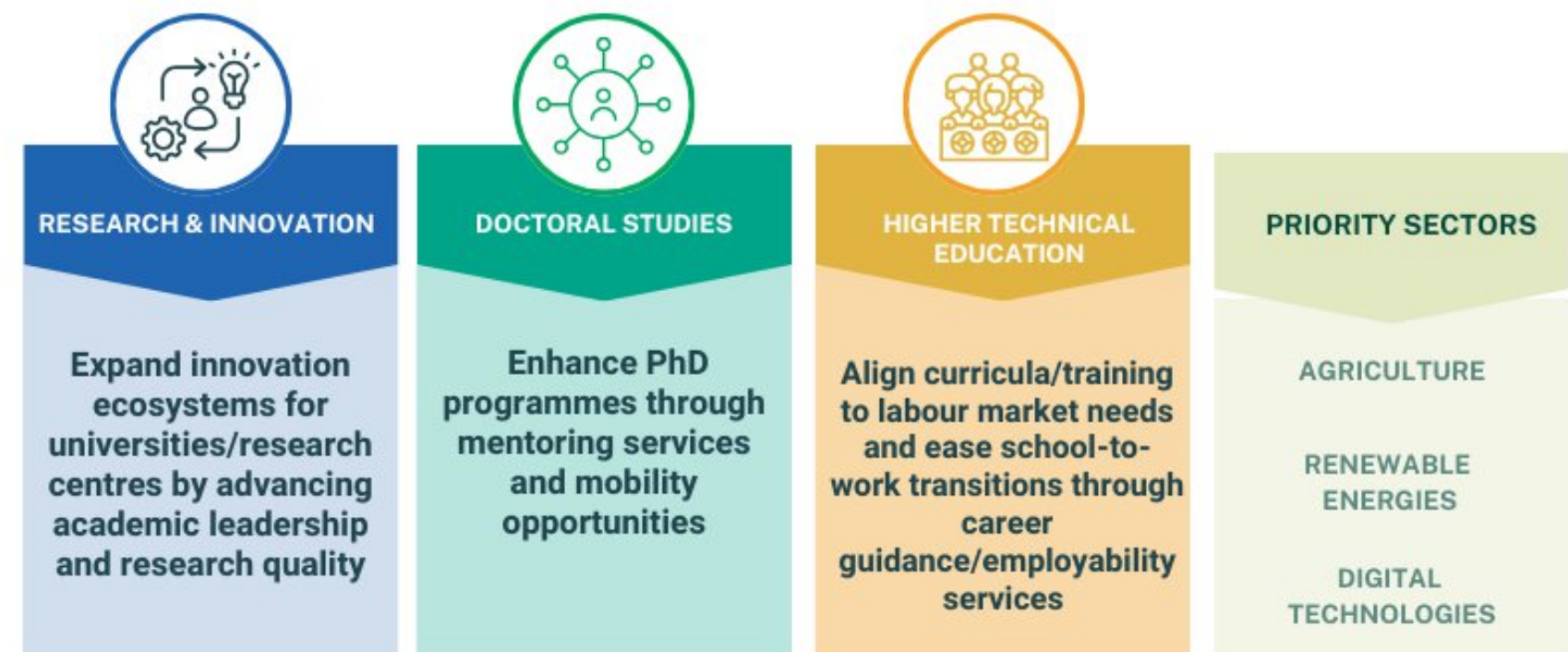
Campus Afrique

Research as a Driver of Inclusive Growth



Campus Africa: Strategic Imperative

Campus Africa works to support and connect Africa's higher education institutions and systems through catalytic investments with long-term impact.



Transversal Area 1: Promote robust quality assurance systems and recognition of qualifications



Transversal Area 2: Foster regular collection of evidence, data and statistics on higher education

Pillar 1: **Research and Innovation Ecosystems**

Our primary goals are to support:

- i) **The shift from traditional academic output to economic, social and industrial "valorization"** of research for national/regional development and innovation in emerging sectors.
- ii) **Capacities and capabilities** - higher education institutions, research leaders, teams (Chairs) and individuals to solve local challenges in food security, energy, and digital economies.
- iii) **Regional spaces, platforms and tools for inter-university collaboration** across our 3 sectoral focus areas.

Regional EAC AI Alliance

East African Community (EAC) AI Alliance:
Advancing AI in Higher-Education, Research, and Policy



EAST AFRICAN SCIENCE AND
TECHNOLOGY COMMISSION
EASTEKO



Implemented by
giz Deutsche Gesellschaft
für Internationale
Zusammenarbeit (GIZ) GmbH

AI Research & Innovation



Fostering cross-border AI research to address regional challenges and unlock cross-border business opportunities through AI Research Network.



AI Skilling

Practice-oriented training to equip youth and professionals with technical AI competencies. Skills development, decent jobs, and private-sector are integrated.



Regional AI Strategy

Supporting the EAC AI Strategy aligned with the 7th EAC Development Strategy and African Union –for infrastructure investments.

TARGET IMPACT

10,000

APPLIED AI RESEARCH
PARTICIPANTS

50,000

EAST AFRICANS REACHED
VIA PRACTICAL AI TRAINING FORMATS

EAC-Wide

HARMONIZED AI POLICY
IMPLEMENTATION

Pillar 2: **Doctoral studies and mobility**

Reimagining mechanisms for supporting the application of **doctoral studies and mobility** to anchor talent within the continent, including working with Ministries and partners to support regional talent marketplaces and discovery platforms for researcher exchange.


Pillar 3: Higher Technical Education

Skills Intelligence: Linking the sectoral research layer to skills intelligence to inform employment policy and HEI curriculum updates based on sector and labour market demand.

GSA Partnerships



Campus Africa Gateway (Knowledge Hub)



The **Campus Africa Gateway** will act as the central **visibility, technical and interoperability** layer for the entire flagship, serving as a continental entry point for students and researcher talent to discover the African higher education offer **as the destination of choice** and for ecosystem partners to identify entry points for collaboration.

Thank you



To learn more:

<https://www.unesco.org/en/higher-education/campus-africa>

Email: campus.africa@unesco.org
Higher Education Section